

# SOL SOFTLEATHER



□  
SOL Old Platin

# DESIGN OVERVIEW



**SOL Bianco**  
Art. 17217 Width: 1350mm



**SOL Creme**  
Art. 17218 Width: 1350mm



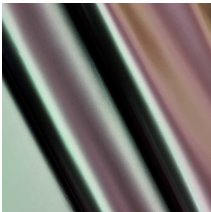
**SOL Mocca**  
Art. 17219 Width: 1350mm



**SOL Nero**  
Art. 17216 Width: 1350mm



**SOL MIRAGE White**  
Art. 17210 Width: 1250mm



**SOL MIRAGE Mint/Viola**  
Art. 17211 Width: 1250mm



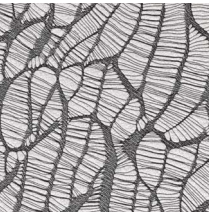
**SOL LACE White/Vintage Brown**  
Art. 17757 Width: 1250mm



**SOL LACE White/Black**  
Art. 17754 Width: 1250mm



**SOL LACE Black/Platin**  
Art. 17753 Width: 1250mm



**SOL MONSOON White/Platin**  
Art. 17756 Width: 1250mm



**SOL MONSOON White/Vintage Brown**  
Art. 17755 Width: 1250mm



**SOL VINTAGE Silver**  
Art. 17204 Width: 1250mm



**SOL VINTAGE Copper**  
Art. 17203 Width: 1250mm



**SOL LUXURY Green**  
Art. 17744 Width: 1250mm



**SOL LUXURY Gold**  
Art. 17745 Width: 1250mm



**SOL LUXURY Bronze**  
Art. 17746 Width: 1250mm



**SOL ANTIGUA Gold**  
Art. 17747 Width: 1250mm



**SOL Old Platin**  
Art. 17748 Width: 1250mm



**SOL OXY Steel**  
Art. 17749 Width: 1250mm



**SOL OXY Terra**  
Art. 17750 Width: 1250mm

**SOL Vintage Silver, SOL Vintage Copper / SOL LUXURY Green, SOL LUXURY Gold, SOL LUXURY Bronze  
 SOL ANTIGUA Gold, SOL Old Platin, SOL OXY Steel, SOL OXY Terra**

1

**Character**

Top quality, stylish synthetic leather with fine nappa leather grain. As a result of its naturalistic optical appearance and touch, the material is virtually indistinguishable from genuine leather.

2

**Technical characteristics**
**Material composition**

Print | Surface: 100% PU | Backing: 82% polyester and 18% cotton | Weight: 420g/m<sup>2</sup> | Thickness: 0,9 mm | Roll width: 1,250 mm, available in 20m and 100m rolls | Core Ø 76 mm

Durable, light-fast, abrasion-resistant, tear-resistant, easy-to-clean, stylish, fashionable, exclusive, opaque, dimensionally stable and super soft.

3

**Application/Processing**

Ideal for all types of coverings, decoration and accessories, and especially for use in fashionable and exclusive living areas. Equally perfect for employment in the bag and leather goods industry. Problem-free processing with standard methods (sewing, tacking, gluing, nailing). Do not use solvent adhesives. A suitability check for the respective application is recommended.

4

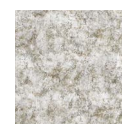
**Other information**
**Cleaning**

Regular cleaning ensures lasting pleasure from your material. Soiling caused by oil, grease and ink must be removed immediately. Use warm, mild soapsuds and a micro-fibre cloth, or a soft hand brush for this purpose. Please avoid solvents, chloride, polish, chemical or wax cleaning agents. Please note that staining from jeans or other textiles is excluded from all manufacturer warranties.

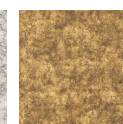
Article	ISO 105-B02:2013 Light-fastness		EN 1021 1/2 Flame retardancy	DIN EN ISO 5470-2 Abrasion resistance
	Grey scale	Blue scale		
SOL Vintage Silver	5	7	✓	> 50.000
SOL Vintage Copper	5	7	✓	> 50.000
SOL LUXURY Green	4	6	✓	> 50.000
SOL LUXURY Gold	4	6	✓	44.000
SOL LUXURY Bronze	4	6	✓	> 50.000
SOL ANTIGUA Gold	4-5	6-7	✓	44.000
SOL Old Platin	4	6	✓	> 50.000
SOL OXY Steel	4-5	6-7	✓	> 50.000
SOL OXY Terra	4-5	6-7	✓	> 50.000



EN1021-1+2



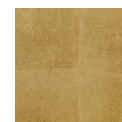
SOL VINTAGE Silver



SOL VINTAGE Copper



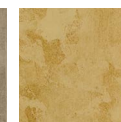
SOL LUXURY Green



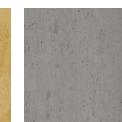
SOL LUXURY Gold



SOL LUXURY Bronze



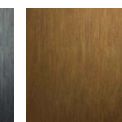
SOL ANTIGUA Gold



SOL Old Platin



SOL OXY Steel



SOL OXY Terra

Contents according to the legal statutes.



**SOL MIRAGE White**  
**SOL MIRAGE Mint/Viola**
**1 Character**

Top quality, stylish synthetic leather with fine nappa leather grain. As a result of its naturalistic optical appearance and touch, the material is virtually indistinguishable from genuine leather.

**2 Technical characteristics**
**Material composition**

Print | Surface: 100% PU | Backing: 100% polyester | Weight: 550g/m<sup>2</sup> | Thickness: 1,25 mm | Roll width: 1,250 mm, available in 20m and 100m rolls | Core Ø 76 mm

Durable, light-fast, abrasion-resistant, tear-resistant, easy-to-clean, stylish, fashionable, exclusive, opaque, dimensionally stable and super soft.

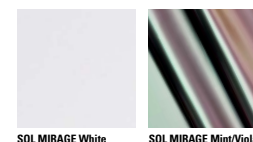
**3 Application/Processing**

Ideal for all types of coverings, decoration and accessories, and especially for use in fashionable and exclusive living areas. Equally perfect for employment in the bag and leather goods industry. Problem-free processing with standard methods (sewing, tacking, gluing, nailing). Do not use solvent adhesives. A suitability check for the respective application is recommended.

**4 Other information**
**Cleaning**

Regular cleaning ensures lasting pleasure from your material. Soiling caused by oil, grease and ink must be removed immediately. Use warm, mild soap suds and a micro-fibre cloth, or a soft hand brush for this purpose. Please avoid solvents, chloride, polish, chemical or wax cleaning agents. Please note that staining from jeans or other textiles is excluded from all manufacturer warranties.

Article	ISO 105-B02:2013 Light-fastness		EN 1021 1/2 Flame retardancy	DIN EN ISO 5470-2 Abrasion resistance
	Grey scale	Blue scale		
SOL MIRAGE White	5	7	✓	22.000
SOL MIRAGE Mint/Viola	5	7	✓	22.000



Contents according to the legal statutes.

**SOL LACE White/Vintage Brown, SOL LACE White/Black, SOL LACE Black/Platin**  
**SOL MONSOON White/Platin, SOL MONSOON White/Vintage Brown**
**1 Character**

Top quality, stylish synthetic leather with fine nappa leather grain. As a result of its naturalistic optical appearance and touch, the material is virtually indistinguishable from genuine leather.

**2 Technical characteristics**
**Material composition**

Print | Surface: 100% PU | Backing: 82% Polyester und 18% Cotton | Weight: 380g/m<sup>2</sup> | Thickness: 0,75 mm | Roll width: 1,250 mm, available in 20m and 100m rolls | Core Ø 76 mm

Durable, light-fast, abrasion-resistant, tear-resistant, easy-to-clean, stylish, fashionable, exclusive, opaque, dimensionally stable, super soft and with micro-perforations.

**3 Application/Processing**

Ideal for all types of coverings, decoration and accessories, and especially for use in fashionable and exclusive living areas. Equally perfect for employment in the bag and leather goods industry. Problem-free processing with standard methods (sewing, tacking, gluing, nailing). Do not use solvent adhesives. A suitability check for the respective application is recommended. Unsuitable for seating furniture.

**4 Other information**
**Cleaning**

Regular cleaning ensures lasting pleasure from your material. Soiling caused by oil, grease and ink must be removed immediately. Use warm, mild soapsuds and a micro-fibre cloth, or a soft hand brush for this purpose. Please avoid solvents, chloride, polish, chemical or wax cleaning agents. Please note that staining from jeans or other textiles is excluded from all manufacturer warranties.

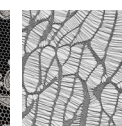
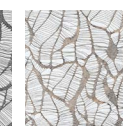
Article	ISO 105-B02:2013 Light-fastness		EN 1021 1/2 Flame retardancy	DIN EN ISO 5470-2 Abrasion resistance
	Grey scale	Blue scale		
SOL LACE White/Vintage Brown	5	7	✓	1.000
SOL LACE White/Black	5	7	✓	1.000
SOL LACE Black/Platin	2	< 5	✓	4.000
SOL MONSOON White/Platin	4	6	✓	1.000
SOL MONSOON White/Vintage Brown	4-5	6-7	✓	1.000



EN1021-1+2


 SOL LACE  
White/Vintage Brown

 SOL LACE  
White/Black

 SOL LACE  
Black/Platin

 SOL MONSOON  
White/Platin

 SOL MONSOON  
White/Vintage Brown

Contents according to the legal statutes.

**SOL Bianco, SOL Nero, SOL Creme, SOL Mocca**

1

**Character**

Top quality, stylish synthetic leather with fine nappa leather grain. As a result of its naturalistic optical appearance and touch, the material is virtually indistinguishable from genuine leather.

2

**Technical characteristics**
**Material composition**

Surface: 100% PU | Backing: 82% polyester und 18% cotton | Weight: 420g/m<sup>2</sup> | Thickness: 0,9 mm | Roll width: 1,350 mm, available in 20m and 100m rolls | Core Ø 76 mm

Durable, light-fast, abrasion-resistant, tear-resistant, easy-to-clean, stylish, fashionable, exclusive, opaque, dimensionally stable and super soft.

3

**Application/Processing**

Ideal for all types of coverings, decoration and accessories, and especially for use in fashionable and exclusive living areas. Equally perfect for employment in the bag and leather goods industry. Problem-free processing with standard methods (sewing, tacking, gluing, nailing). Do not use solvent adhesives. A suitability check for the respective application is recommended.

4

**Other information**
**Cleaning**

Regular cleaning ensures lasting pleasure from your material. Soiling caused by oil, grease and ink must be removed immediately. Use warm, mild soapsuds and a micro-fibre cloth, or a soft hand brush for this purpose. Please avoid solvents, chloride, polish, chemical or wax cleaning agents. Please note that staining from jeans or other textiles is excluded from all manufacturer warranties.

Article	ISO 105-B02:2013 Light-fastness		EN 1021 1/2 Flame retardancy	DIN EN ISO 5470-2 Abrasion resistance
	Grey scale	Blue scale		
SOL Bianco	5	7	✓	> 50.000
SOL Nero	5	7	✓	> 50.000
SOL Creme	5	7	✓	> 50.000
SOL Mocca	5	7	✓	> 50.000



EN1021-1+2

Contents according to the legal statutes.



# SOL Applications



# SOL SOFTLEATHER

**i** This leaflet was prepared according to the best of our knowledge and with special diligence. The information that it contains derives from practical experience and company testing, and corresponds with our current know-how. No responsibility is accepted for printing and standard errors or mistakes.



SIBU DESIGN GmbH & CoKG  
Jupiterstraße 8 / 4452 Ternberg / Austria / Tel.: +43(0)7256.6025.0  
Fax: +43(0)7256.7020 / [www.sibu.at](http://www.sibu.at) / E-mail: [info@sibu.at](mailto:info@sibu.at)